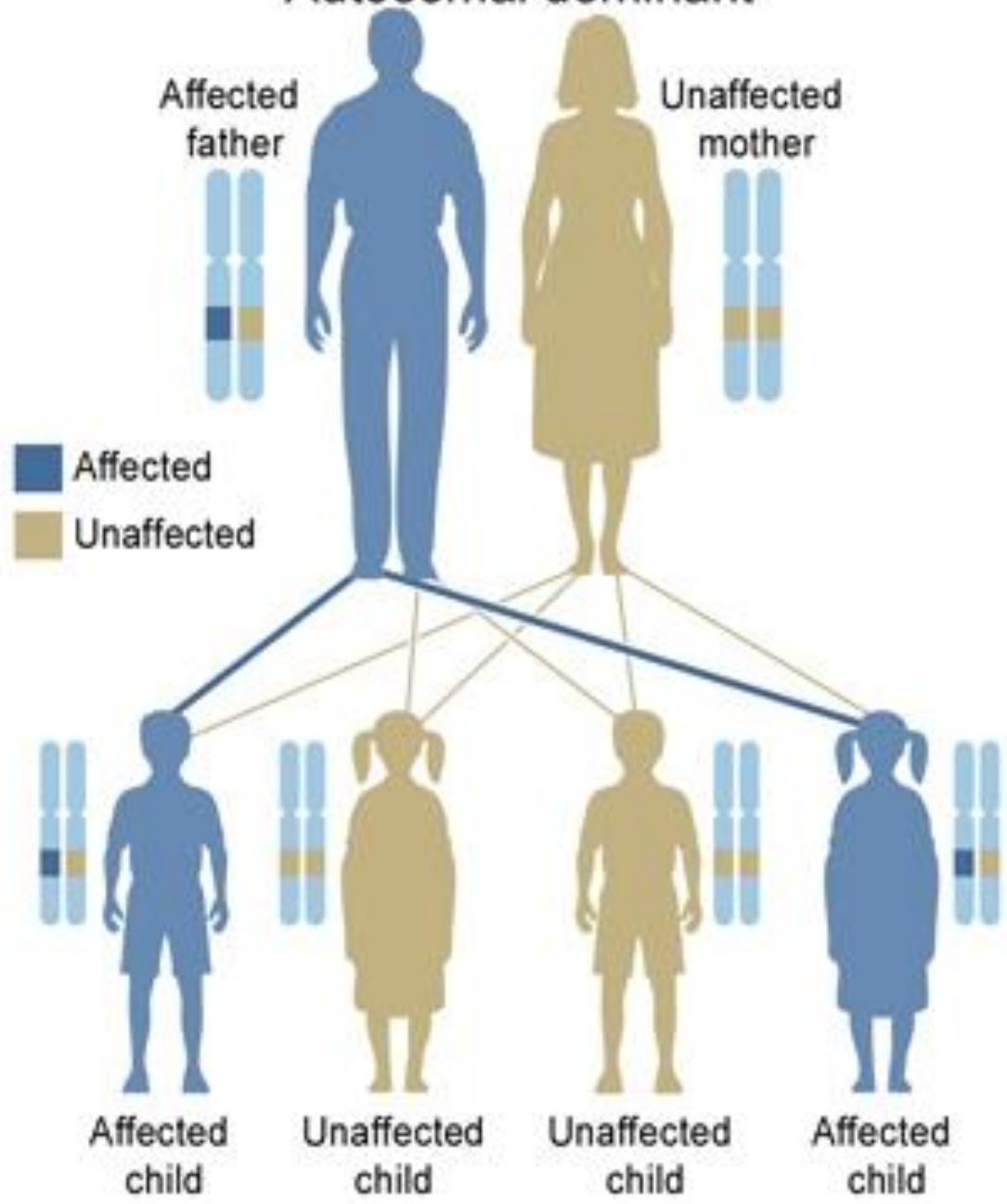


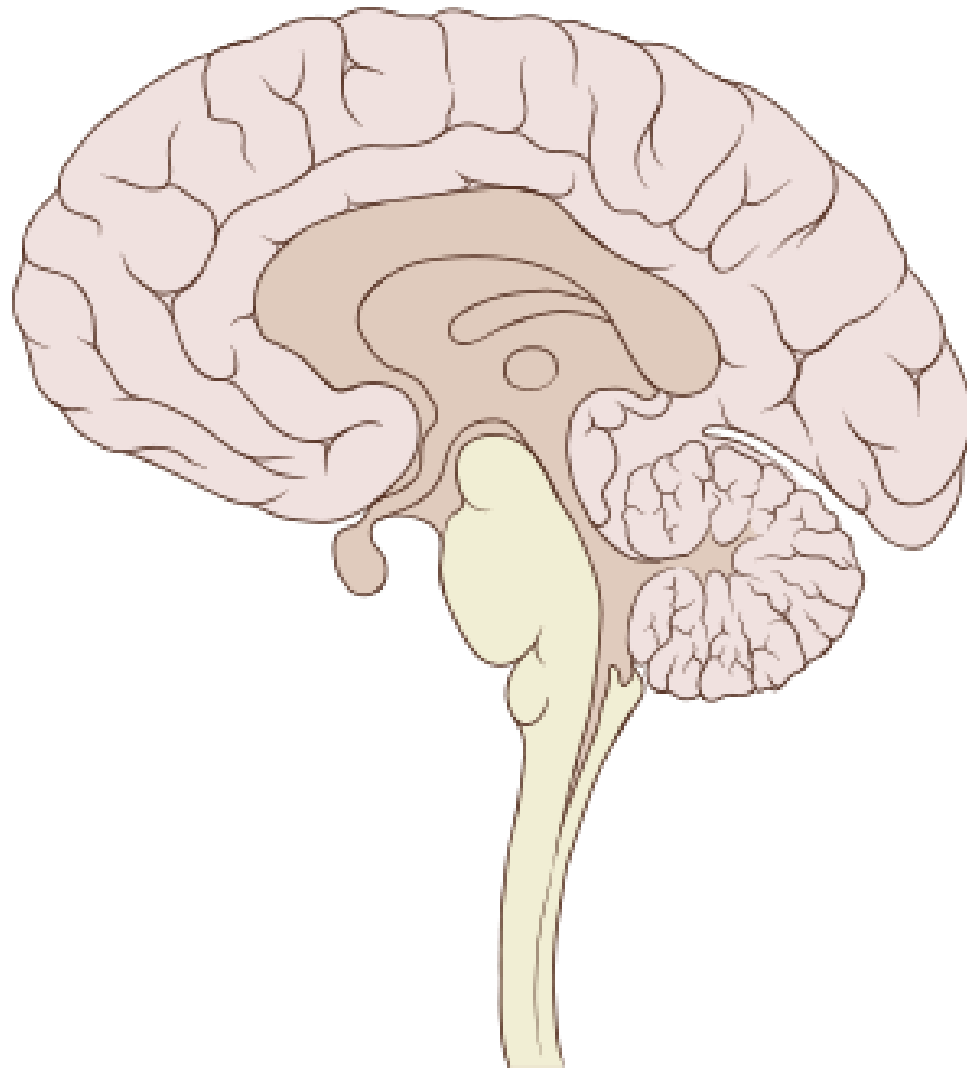


Huntington's

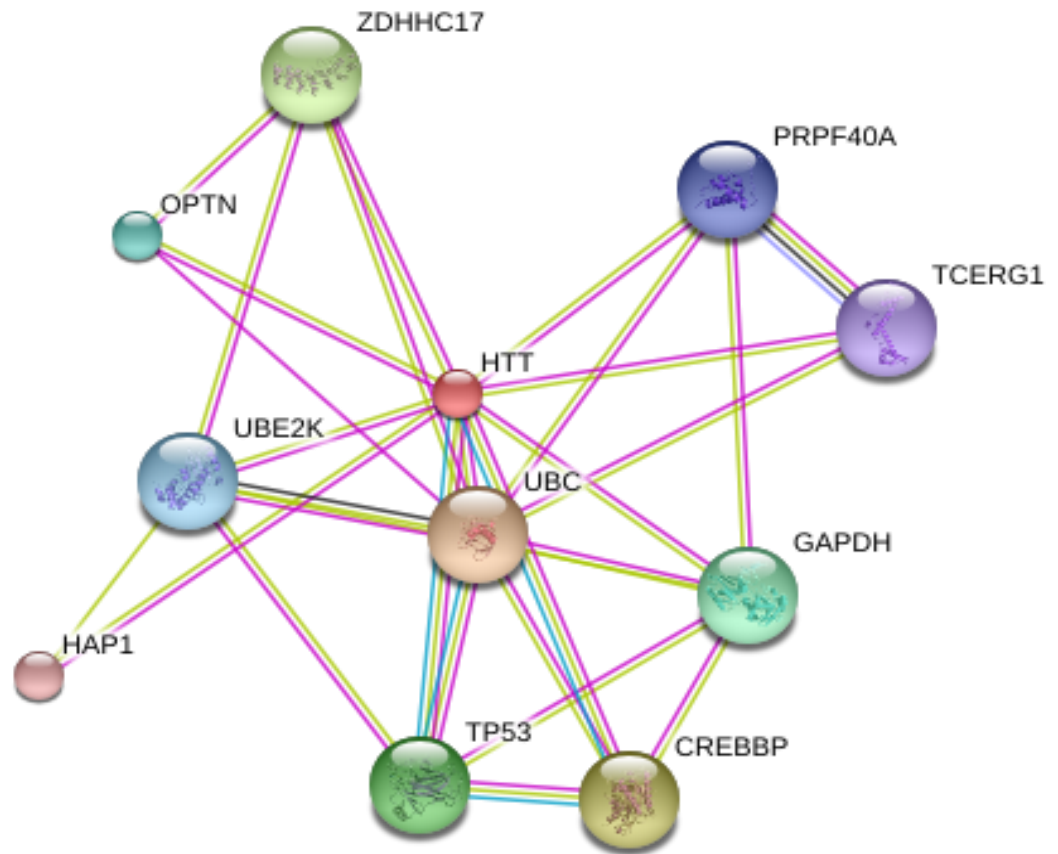
- Early onset neurodegenerative disorder
- Affects ~3-7 per 1000,000
- Autosomal dominant mutation in *Htt* gene expanding the *CAG* repeats from normal 10-30 to 40-120.
- Movement, cognitive and psychiatric disorders with a wide spectrum of signs and symptoms
- 15 to 20 Years following diagnoses
- Affects the whole brain but primarily the basal ganglia
- No cure only treatments for symptoms

Autosomal dominant

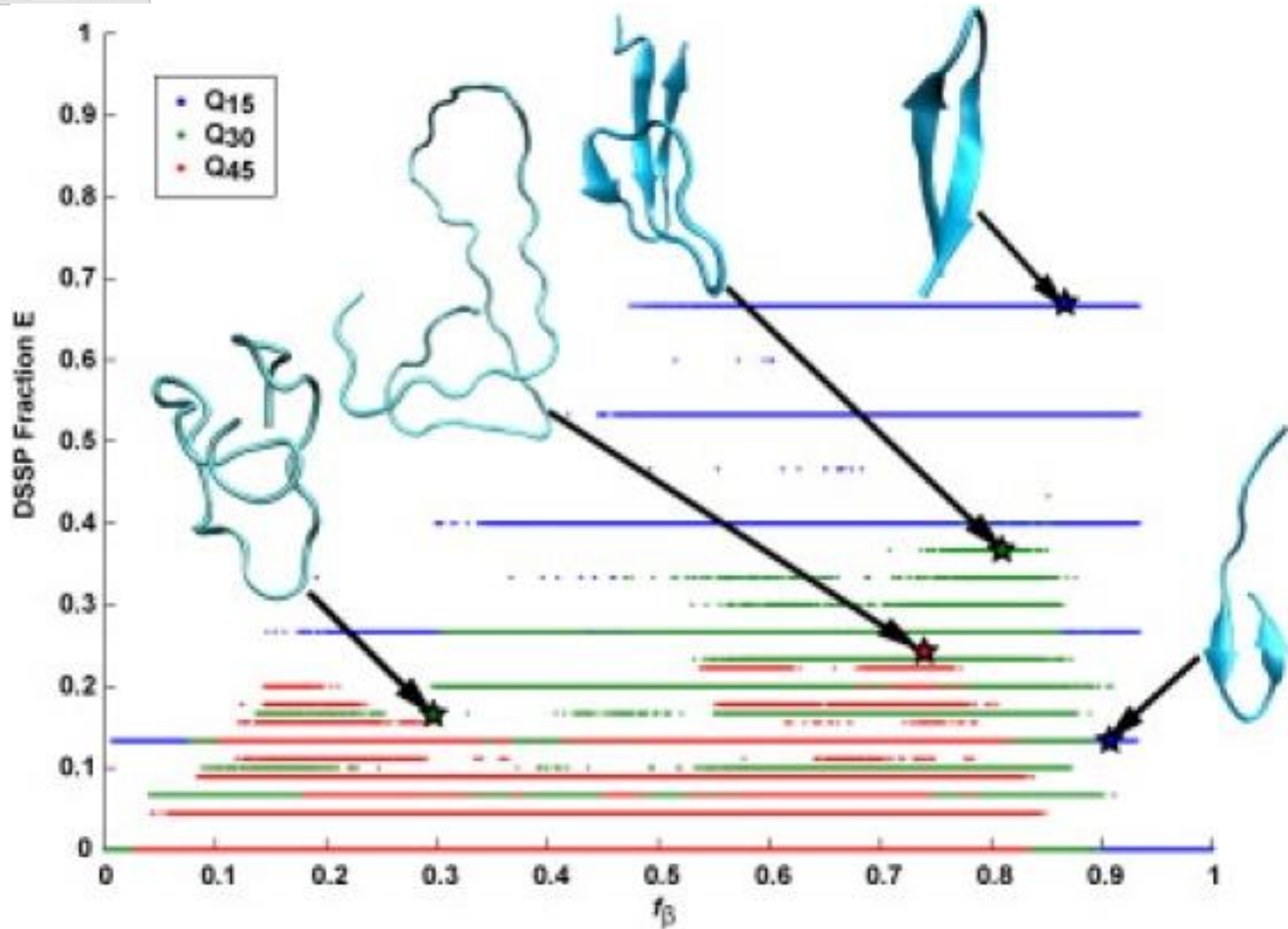




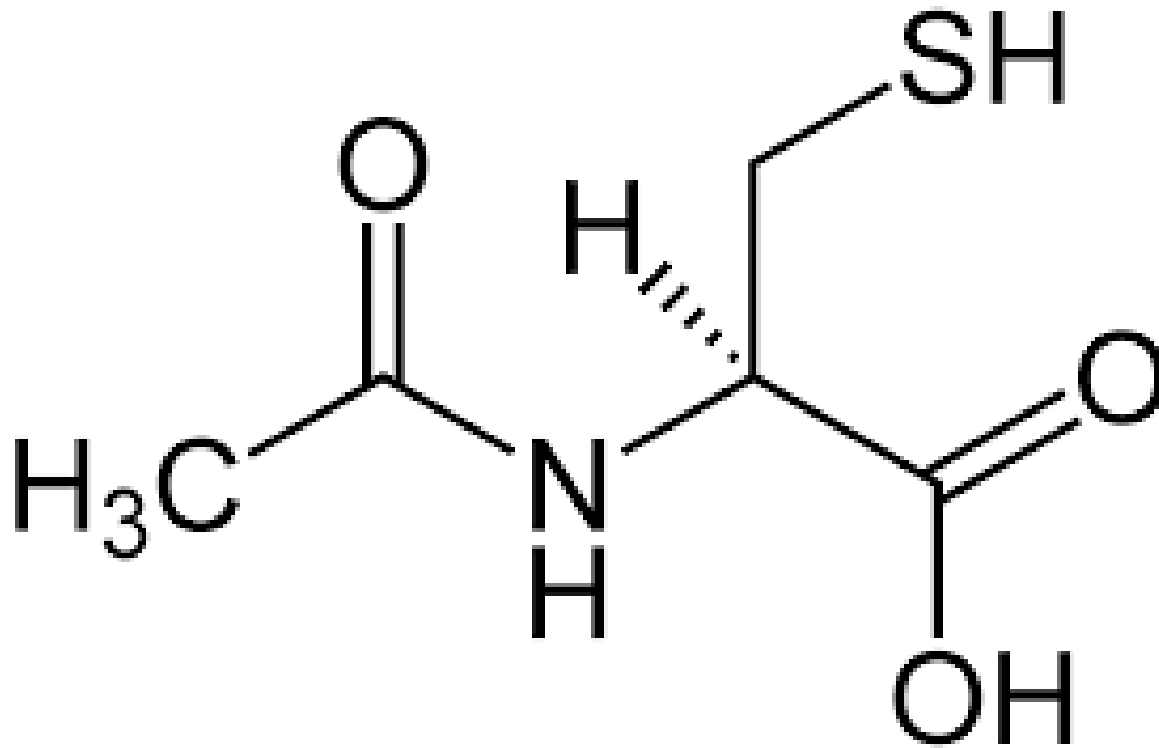
Team Workshop 1: Draw the general location of the basal ganglia? Hypothesize why damage to this area occurs early in Huntington's? How could you test your hypothesis?



Team Workshop 2: Use STRING to investigate Htt? Are there any proteins involved in oxidative stress?



Team Workshop 3: Use the protein tools at EXPASY to investigate the functional impact of polyQ peptides? Start with 6 and work up.



Team Workshop 4: Why is N-acetylcysteine proposed as a potential treatment for Huntington's disease? Can you propose an alternative treatment? Use the NIH database of clinical trials to find clinical trials directed towards Huntington's. Pick 1 or 2 and list the type of trial, the intervention, patient cohort, outcome measures etc.



Remember

- Before 12 PM of the next class day:
 - go to b.socrative.com/student/login and complete the quiz