

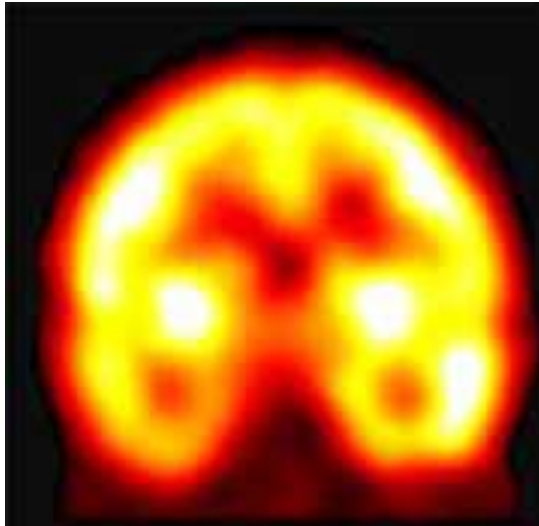


Epilepsy and Seizure

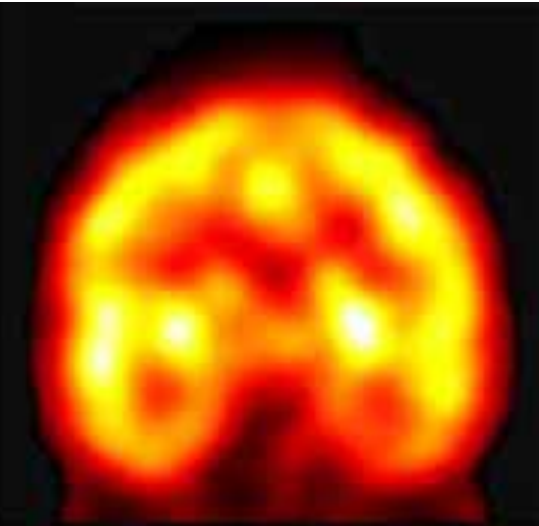
- CNS disorder due to activity imbalance
 - Various severity of manifestations
 - Incapacitation to a blank stare
 - Incidence of 4,000 per 100,000
- Multiple Linked Causes
 - Genetic
 - Head trauma
 - Stroke
 - Infectious diseases (meningitis, HIV, etc)
 - Alzheimer's
- Treatments
 - Anti-epileptics
 - Surgery



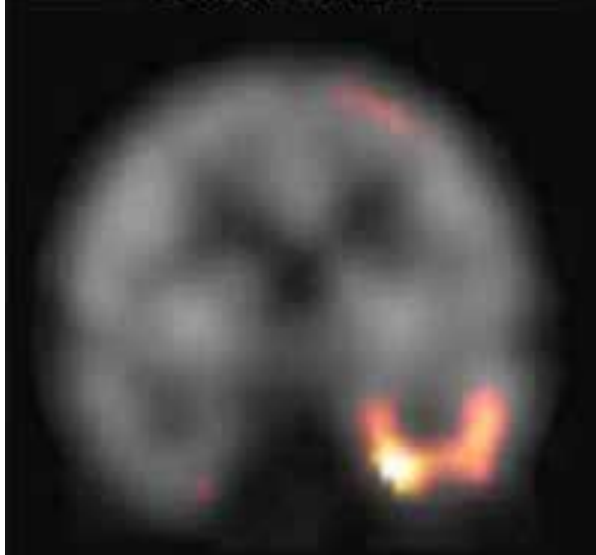
Team Workshop 1:
How does SPECT
differ from PET and
why is this used to
determine surgical
locations for severe
epilepsy?



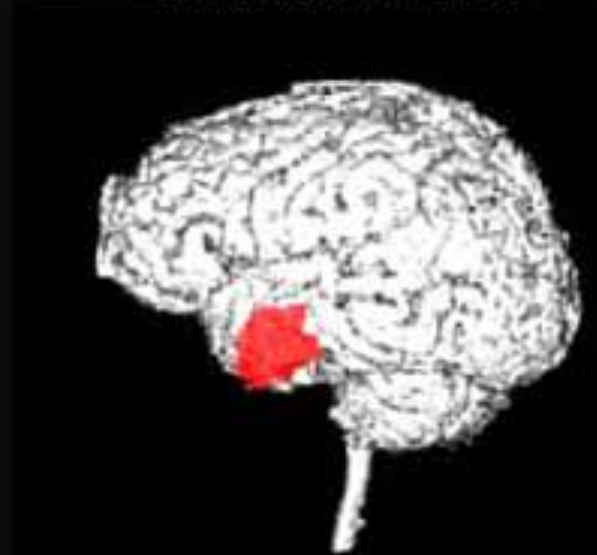
Seizure SPECT



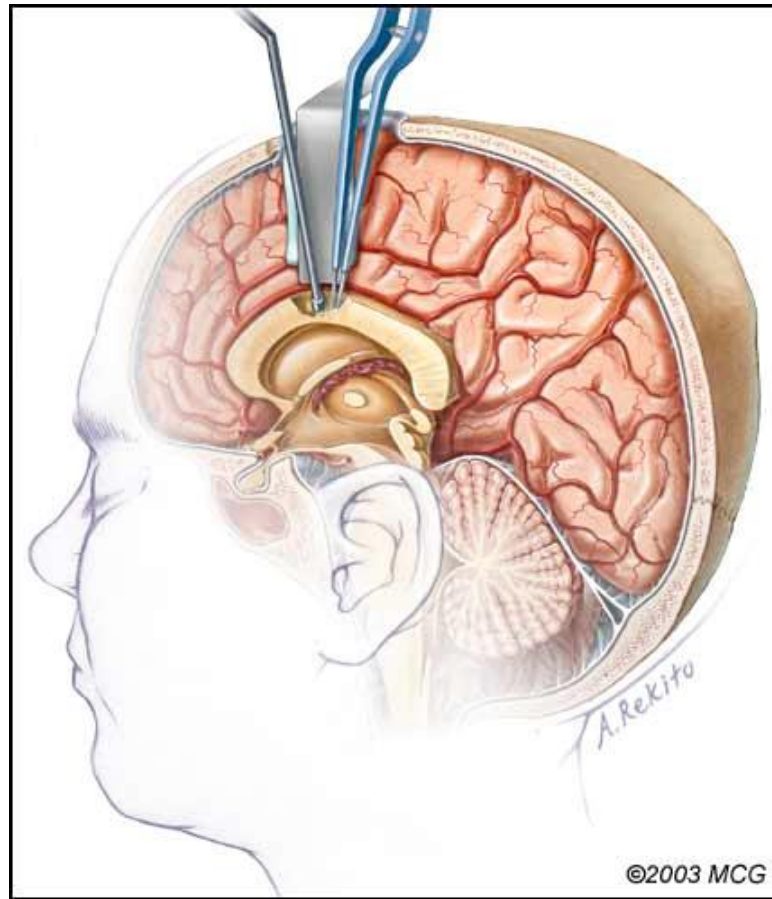
Non-seizure SPECT



Subtraction SPECT



Subtraction SPECT
combined with MRI



Team Workshop 2: Corpus collosotomy has been used to treat severe epilepsy. Determine what the relative cannabinoid receptor levels are in the corpus collosum and hypothesize why cannabanooid treatment may be effective for severe epilepsy.



Team Workshop 3

Using CLINCATRIALS as guide, design a clinical trial to tests the effectiveness of cannabinoids in suppressing seizures. You must include at least the following

1. Cohort (inclusion/exclusion)
2. Drug treatment and administration mode
3. Comparator
4. Outcome measures



Remember

- Before 12 PM of the next class day:
 - go to b.socrative.com/student/login and complete the quiz